

## VALVE REGULATED LEAD-ACID RECHARGEABLE BATTERY

### DC Series

Deep Cycle series batteries are designed to have a large amount of stored current discharged between charging sessions, with very heavy non-porous battery plates to withstand repeated major discharging and charging cycle(deep cycle). The Deep-cycle batteries uses a different chemistry for the plates active paste material, and a slightly stronger electrolyte than normal battery electrolyte, which allows for a much longer life in deep cycle applications.

**FL122000DC**

**(12V200Ah/10hr)**

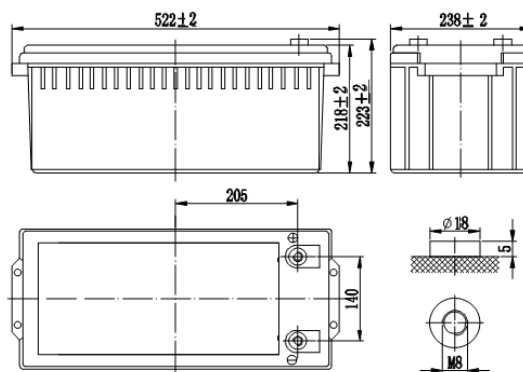


### Application

- Alarm System
- Cable Television
- Power tools
- Emergency Power System
- Security System
- Medical Equipment
- Solar and Wind Power System
- Communication Equipment
- Control Equipment
- Toys

### General Features

- Sealed and maintenance free operation.
- Non-Spillable construction design.
- ABS containers and covers (UL94HB, UL94V-0) optional.
- Safety valve installation for explosion proof .
- High quality and high reliability.
- Exceptional deep discharge recovery performance.
- Low self discharge characteristic.
- Flexibility design for multiple install positions.



### CONSTRUCTION

Component	Positive plate	Negative plate	Container	Cover	Safety valve	Terminal	Separator	Electrolyte
Raw material	Lead dioxide	Lead	ABS	ABS	Rubber	Copper	Fiberglass	Sulfuric acid

### TECHNOLOGY PARAMETER

Battery model	FL122000DC			
Designed Cycle Life	>350 Cycles @ -0.5CA to 9.6V			
Capacity (25°C)	20HR(10.2A, 10.8V)	10HR(20A, 10.8V)	5HR(32.6A, 10.5V)	1HR(124A, 9.60V)
	204Ah	200Ah	163Ah	124Ah
Dimensions	Length	Width	Height	Total Height
	522±2mm	238±2mm	218±2mm	223±2mm
Approx. weight (±3%)	61.8Kg (136.24bs)			
Internal resistance	Full charged at 25°C: Approx. 3.5mOhms			
Self discharge	3% of capacity declined per month at 25°C (average)			
Capacity Affected by Temp.(10HR)	40 °C	25 °C	0 °C	-15 °C
	102%	100%	85%	65%
Charge Voltage (25°C)	Cycle use		Float use	
	14.4-14.7V(-30mV/°C), max. Current: 50A		13.6-13.8V(-20mV/°C)	

## VALVE REGULATED LEAD-ACID RECHARGEABLE BATTERY

### FL122000DC (12V200Ah/10hr)

Constant current discharge ratings-amperes at 25°C

End Point Volts/Cell	5min	10min	15min	30min	1h	3h	5h	10h	20h
1.60V	610	461	351	216	124	54.5	35.6	20.3	10.7
1.65V	580	440	334	212	119	52.7	34.6	20.3	10.6
1.70V	545	416	317	208	115	51.0	33.6	20.2	10.5
1.75V	511	391	299	204	110	48.8	32.6	20.0	10.4
1.80V	477	370	282	200	106	46.6	31.6	20.0	10.2

Constant power discharge ratings-watts at 25°C

End Point Volts/Cell	5min	10min	15min	30min	1h	3h	5h	10h	20h
1.60V	1092	829	635	393	227	100	65.9	37.8	20.0
1.65V	1032	788	601	383	217	96.5	63.7	37.5	19.7
1.70V	965	740	567	374	208	92.8	61.5	37.2	19.5
1.75V	899	692	533	365	199	88.3	59.4	36.6	19.2
1.80V	834	652	500	355	189	83.9	57.3	36.4	19.0

