

VALVE REGULATED LEAD-ACID RECHARGEABLE BATTERY

DC Series

Deep Cycle series batteries are designed to have a large amount of stored current discharged between charging sessions, with very heavy non-porous battery plates to withstand repeated major discharging and charging cycle(deep cycle). The Deep-cycle batteries uses a different chemistry for the plates active paste material, and a slightly stronger electrolyte than normal battery electrolyte, which allows for a much longer life in deep cycle applications.

FL12280DC

(12V28.0Ah/20hr)

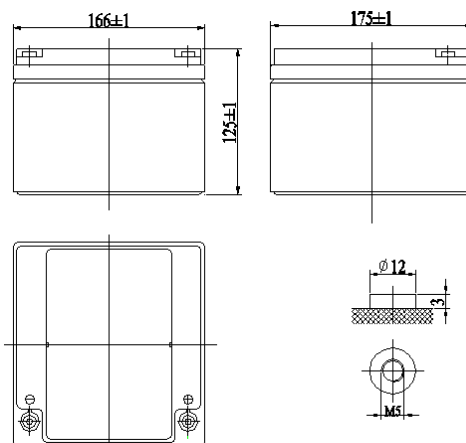


Application

- Alarm System
- Medical Equipment
- Cable Television
- Solar and Wind Power System
- Power tools
- Communication Equipment
- Emergency Power System
- Control Equipment
- Security System
- Toys

General Features

- Sealed and maintenance free operation.
- Non-Spillable construction design.
- ABS containers and covers (UL94HB, UL94V-0) optional.
- Safety valve installation for explosion proof .
- High quality and high reliability.
- Exceptional deep discharge recovery performance.
- Low self discharge characteristic.
- Flexibility design for multiple install positions.



CONSTRUCTION

Component	Positive plate	Negative plate	Container	Cover	Safety valve	Terminal	Separator	Electrolyte
Raw material	Lead dioxide	Lead	ABS	ABS	Rubber	Copper	Fiberglass	Sulfuric acid

TECHNOLOGY PARAMETER

Battery model	FL12280DC			
Designed Cycle Life	>350 Cycles @ -0.5CA to 9.6V			
Capacity (25°C)	20HR(1.4A, 10.5V)	10HR(2.63A, 10.5V)	5HR(4.59A, 10.5V)	1HR(17.6A, 9.60V)
	28Ah	26.3Ah	22.95Ah	17.6Ah
Dimensions	Length	Width	Height	Total Height
	175±1mm	166±1mm	125±1mm	125±1mm
Approx. weight (±3%)	8.5Kg (18.74lbs)			
Internal resistance	Full charged at 25°C: Approx. 8.5mOhms			
Self discharge	3% of capacity declined per month at 25°C (average)			
Capacity Affected by Temp.(20HR)	40 °C	25 °C	0 °C	-15 °C
	102%	100%	85%	65%
Charge Voltage (25°C)	Cycle use		Float use	
	14.4-14.7V(-30mV/°C), max. Current: 8.4A		13.6-13.8V(-20mV/°C)	

VALVE REGULATED LEAD-ACID RECHARGEABLE BATTERY

FL12280DC (12V28.0Ah/20hr)

Constant current discharge ratings-amperes at 25°C

End Point Volts/Cell	5min	10min	15min	30min	1h	3h	5h	10h	20h
1.60V	104	73.1	55.6	31.3	17.6	7.66	5.00	2.77	1.47
1.65V	99.2	69.8	52.9	30.1	17.2	7.41	4.86	2.72	1.44
1.70V	93.3	65.9	50.2	28.8	16.8	7.16	4.73	2.66	1.42
1.75V	87.4	62.0	47.5	27.3	16.1	6.86	4.59	2.63	1.40
1.80V	81.5	58.7	44.8	26.0	15.3	6.55	4.45	2.58	1.38

Constant power discharge ratings-watts at 25°C

End Point Volts/Cell	5min	10min	15min	30min	1h	3h	5h	10h	20h
1.60V	193	135	103	58.6	33.0	14.5	9.51	5.28	2.82
1.65V	182	128	97.9	55.9	32.2	13.9	9.19	5.17	2.75
1.70V	171	121	92.4	53.2	31.2	13.4	8.88	5.04	2.70
1.75V	159	113	86.9	50.3	29.8	12.8	8.58	4.95	2.65
1.80V	147	105.7	81.0	47.3	28.0	12.0	8.23	4.80	2.57

