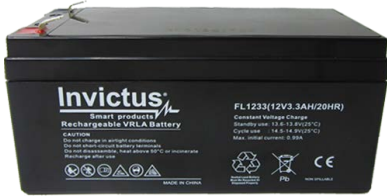


VALVE REGULATED LEAD-ACID RECHARGEABLE BATTERY

FL1233

(12V3.3Ah/20hr)



FL Series

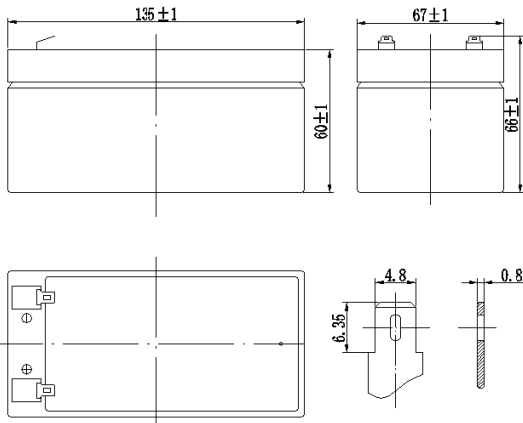
Valve Regulated Lead Acid batteries are designed with AGM (Absorbent Glass Mat) technology, high performance plates and electrolyte to gain extra power output for common power backup system applications widely used in the field of UPS, Emergency Lighting System.

Application

- Alarm System
- Medical Equipment
- Cable Television
- UPS
- Power tools
- Communication Equipment
- Emergency Power System
- Control Equipment
- Security System
- Toys

General Features

- Sealed and maintenance free operation.
- Non-Spillable construction design.
- ABS containers and covers(UL94HB, UL94V-0) optional.
- Safety valve installation for explosion proof .
- High quality and high reliability.
- Exceptional deep discharge recovery performance.
- Low self discharge characteristic.
- Flexibility design for multiple install positions.



CONSTRUCTION

Component	Positive plate	Negative plate	Container	Cover	Safety valve	Terminal	Separator	Electrolyte
Raw material	Lead dioxide	Lead	ABS	ABS	Rubber	Copper	Fiberglass	Sulfuric acid

TECHNOLOGY PARAMETER

Battery model	FL1233			
Designed Floating Life	5 Years			
Capacity (25 °C)	20HR(0.165A, 10.5V)	10HR(0.299A, 10.5V)	5HR(0.52A, 10.5V)	1HR(2.08A, 9.60V)
	3.3Ah	2.99Ah	2.6Ah	2.08Ah
Dimensions	Length	Width	Height	Total Height
	135±1mm	67±1mm	60±1mm	66±1mm
Approx. weight (±3%)	1.30Kg (2.87 lbs)			
Internal resistance	Full charged at 25 °C: Approx. 45mOhms			
Self discharge	3% of capacity declined per month at 25 °C (average)			
Capacity Affected by Temp.(20HR)	40 °C	25 °C	0 °C	-15 °C
	102%	100%	85%	65%
Charge Voltage (25 °C)	Cycle use		Float use	
	14.5-14.9V(-30mV/°C), max. Current: 0.99A		13.6-13.8V(-20mV/°C)	

VALVE REGULATED LEAD-ACID RECHARGEABLE BATTERY

FL1233 (12V3.3Ah/20hr)

Constant current discharge ratings-amperes at 25°C

End Point Volts/Cell	5min	10min	15min	30min	1h	3h	5h	10h	20h
1.60V	11.2	7.86	5.98	3.37	2.08	0.87	0.57	0.314	0.173
1.65V	10.7	7.50	5.69	3.23	2.04	0.84	0.55	0.309	0.169
1.70V	10.0	7.08	5.40	3.09	1.98	0.81	0.54	0.303	0.167
1.75V	9.40	6.66	5.11	2.94	1.90	0.78	0.52	0.299	0.165
1.80V	8.77	6.31	4.81	2.79	1.81	0.74	0.50	0.293	0.162

Constant power discharge ratings-watts at 25°C

End Point Volts/Cell	5min	10min	15min	30min	1h	3h	5h	10h	20h
1.60V	20.8	14.5	11.1	6.30	3.90	1.64	1.08	0.60	0.33
1.65V	19.6	13.8	10.5	6.01	3.81	1.58	1.04	0.59	0.32
1.70V	18.4	13.0	9.93	5.72	3.69	1.52	1.01	0.57	0.32
1.75V	17.1	12.1	9.34	5.41	3.52	1.45	0.97	0.56	0.31
1.80V	15.8	11.4	8.71	5.08	3.31	1.37	0.93	0.54	0.30

