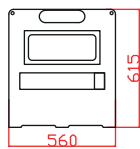
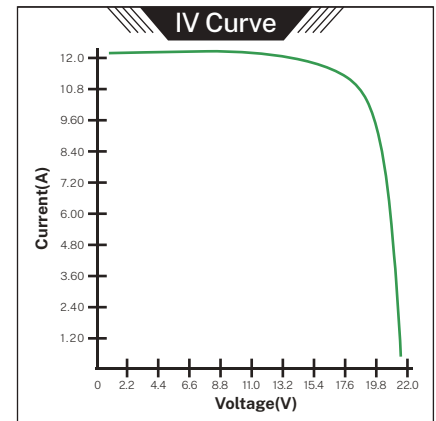


# 200W Mono Foldable Solar Panel

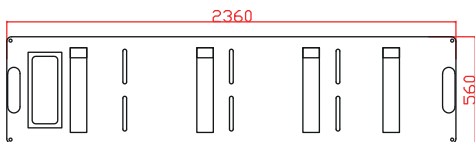
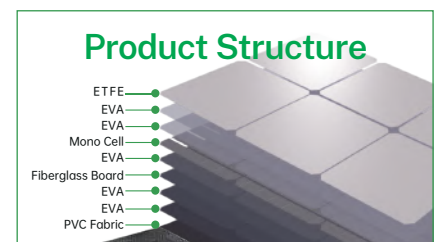
ETFE+EVA+EVA+CELL+EVA+ FIBERGLASS BOARD+EVA +EVA+PVC



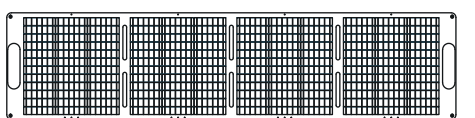
◆◆Electrical Characteristics◆◆		
Max Power	<b>Pmax</b>	<b>200W</b>
Max Power Voltage	<b>Vmp</b>	<b>18V</b>
Max Power Current	<b>Imp</b>	<b>11.11A</b>
Open Circuit Voltage	<b>Voc</b>	<b>21.6V</b>
Short Circuit Current	<b>Isc</b>	<b>12.22A</b>
Maximum System Voltage		<b>600V</b>
Cell Efficiency		<b>&gt;23%</b>
Number of Cells in Series		<b>36</b>
Cell dimension(mm)		<b>166*166</b>
Max Power tolerance		<b>+ (0~3W)</b>



◆◆Temperature Co-efficients◆◆	
Power	-0.38%/ C
Voltage	-60.08mV/ C
Max Power Current	2.2mA/ C



◆◆Mechanical Characteristics◆◆	
Weight	8.2KG
Expand size	2360*560*5mm
Folded size	615*560*35mm
Cable & Connector	3.0m with MC4



**Note:**All electrical parameters are rated at standard test conditions (irradiance of 1000W/m<sup>2</sup>, AM 1.5G, cell temperature 77F/25 C)

## ◆◆Product Features◆◆



Waterproof



Foldable & Portable



Adjustable Kickstand



Easy Storage