

Dear user: Thanking you for selecting our products!

# PRODUCT INTRODUCTION

## eLOG01—Logger

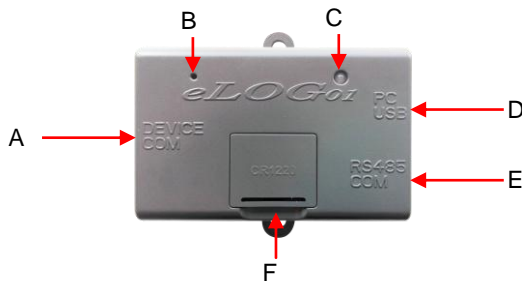
### 1. Product Introduction

eLOG01 is a record accessory matched with controller of RS485 interface, It can record solar system working data, and also real-time monitor system status via PC software or MT50. Default record interval is every 10 minutes, with record range to 4 months.

#### Main Features:

- Record & download system data
- Compatible with PC software & MT50 for real-time monitoring
- Connect to PC via USB interfaces with high compatibility
- Powered up by controller communication interface
- Record capacity: 20000 points(MAX)
- LED Indicator design, more intuitive display

### 2. Product Features



Item	Instruction	
<b>A</b>	<b>DEVICE COM</b> interface (RJ45)	Connect the controller
<b>B</b>	Reload button	Restore factory settings
<b>C</b>	Working indicator	Working status
<b>D</b>	<b>PC USB</b> interface (Micro USB)	Download and manage datas
<b>E</b>	<b>RS485 COM</b> interface(RJ45)	Real-time monitoring
<b>F</b>	CR1220 (Button cell holder)	Store the historical datas



**NOTE:** After rebooting the controller, please adjust controller clock accurately, otherwise it will lead to eLOG01 time disordered or loss of datas.



**NOTE:** eLOG01 is not equipped with CR1220 button cell form factory.

### 3. Reload Button

Operation	Instruction
Press the button	Indicator is flashing once, eLOG01 is normal Indicator is OFF, eLOG01 is halted
Press the button and hold on 5s	Clear the log records and restore factory settings



**NOTE:** When eLOG01 model is not match with the controller, you can press the button and hold on 5s to clear this state. However, the previous data record will be cleared simultaneously.

### 4. Indicator

color	Status	Instruction
Green	Flashing once	Normal
Green	On Solid	Normal
Green/Red	OFF	Fault or halt
Red	On Solid	Standby
Red	Fast Flashing(2Hz)	Inconsistent model matching (ID/SN/models)

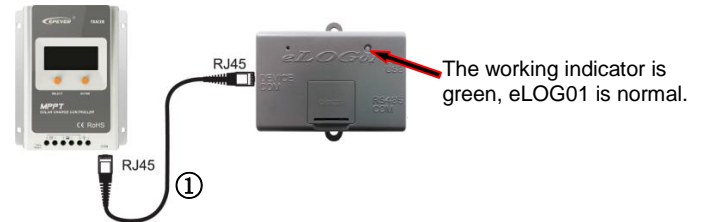
Red	Slowly Flashing(1Hz)	Not support this controller Communication interrupted Memory chip malfunction
-----	----------------------	---

### 5. Applicable Models

Series	LS-B	VS-BN	Tracer-BN	Tracer-A
Communication	RS485			
Interface type	RJ45			

### 6. Function and Software Operation

#### (1)Data Recording



#### ①RS485 communication cable

Model: CC-RS485-RS485-200U

Function: RS485 to RS485

Cable length: 2m

#### (2)Log Download

##### ●Local download



##### ●Remote download(CR1220 cell is needed)



#### ①RS485 communication cable

Model: CC-RS485-RS485-200U

Function: RS485 to RS485

Cable length: 2m

#### ②USB communication cable

Model: CC-USB-USB-150U

Function: USB to USB

Cable length: 1.5m

#### ●Software Installation Instructions

Name	Model	Icon	Functions
Log download tool <sup>①</sup>	eLOG01		Download and inquiry Logs
PC software <sup>②</sup>	Solar Station Monitor		Real time monitoring
Communication cable driver			xr21x141x_ver1840_x86_silent_installer.exe

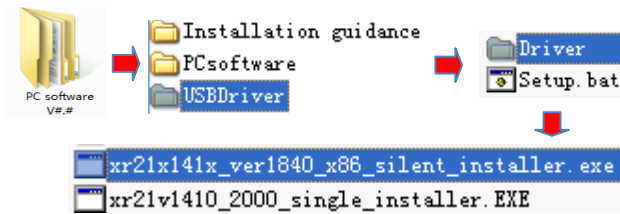
①Website: <http://www.epsolarpv.com/en/index.php/Technical/download>

-----eLOG01 Download Tools.

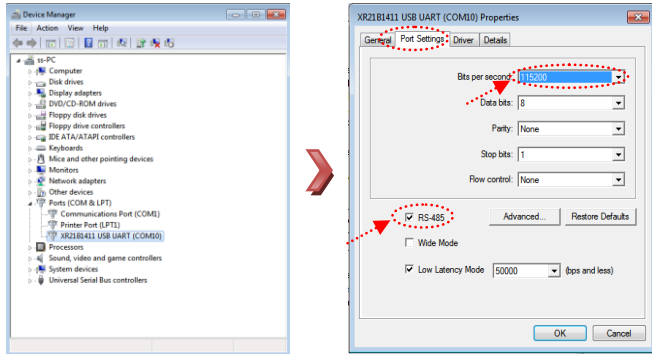
②Website: <http://www.epsolarpv.com/en/index.php/Technical/download>

-----PC Software for the Solar Charge Controller.

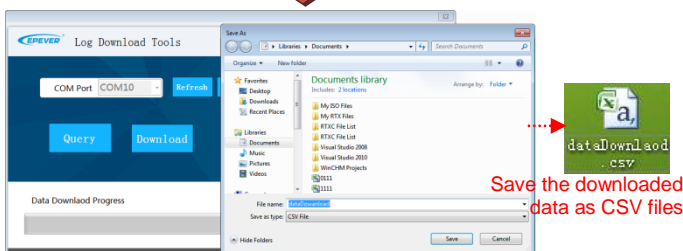
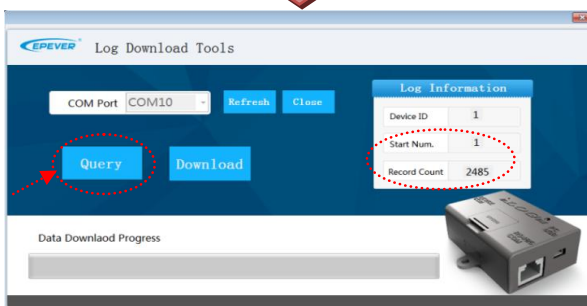
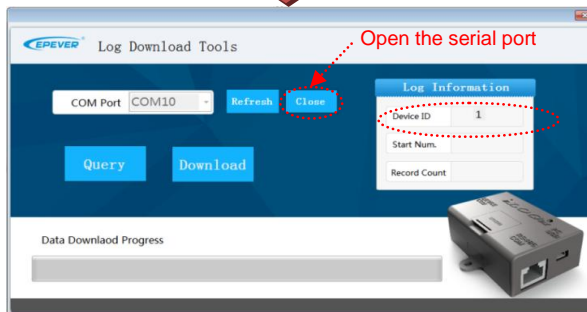
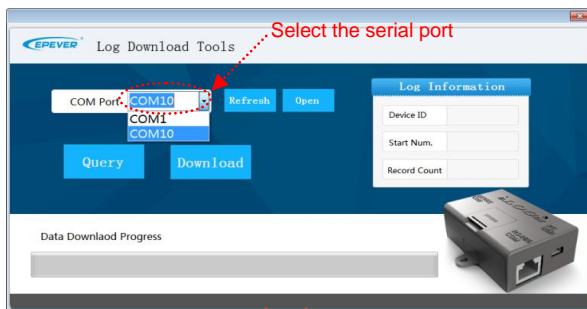
### 1) Communication cable driver installation



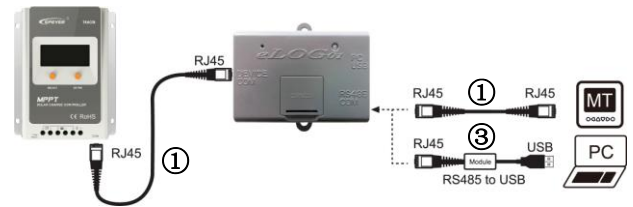
### 2) Set up the computer port attributes



### 3) Log download tool



### (3) Real time monitoring



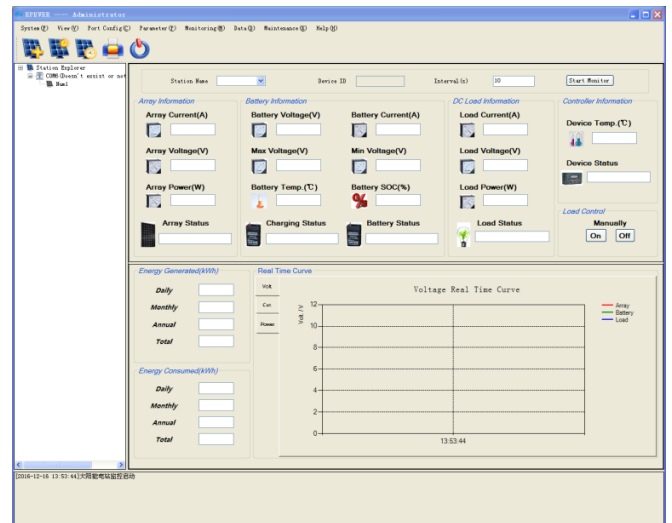
Real-time monitor the system status by the "Solar Station Monitor" software or Remote Meter.

#### ① RS485 communication cable

Model: CC-RS485-RS485-200U  
Function: RS485 to RS485  
Cable length: 2m

#### ③ USB communication cable (Optional)

Model: CC-USB-RS485-150U  
Function: USB to RS485  
Cable length: 1.5m



NOTE: Refer to the "Solar Station Monitor" and Remote Meter MT50 user manual.

## 7. Technical Parameters

Model	eLOG01
Input voltage	4~10VDC Powered up by RS485 interface
Average power consumption	0.3W
Baud rate	115200
Communication	RS485
Interface type	2 RJ45 1 Micro USB
Record interval	10 minutes
Record capacity	20000 points
Dimensions	71x67.62x25.8mm
Mounting dimension	57.6mm
Mounting hole size	Φ4.5
Working temperature	-25℃~75℃
Humidity	5-95% (N.C.)
Enclosure	IP30
Net weight	42g
Warranty	2 years

Any changes without prior notice! Version number: V1.0