



PORTABLE POWER STATION

ATZ 3600EU



Product Introduction

The ATZ series stands out as a reliable portable power station, perfect for a variety of applications including outdoor adventures, emergency home backup power, and more. The outstanding power output of the ATZ series, which has numerous AC and DC output interfaces, reaches up to 3600W and peaks at 5400W. Its dual-wheel handle design guarantees easy mobility. With ultra-fast charging and various charging methods, it caters to the evolving energy needs of modern lifestyles. The device, equipped with a large-capacity lithium battery expandable up to 4096Wh, provides reliable power to meet your needs. Enjoy your own life with the ATZ series.



Technical parameters for main battery pack



Product model	ATZ3600EU
AC input	
Rated AC input voltage	230VAC
AC voltage range	200VAC~240VAC
Breakdown voltage	290VAC
AC input frequency	50Hz/60Hz
Rated AC input power	2300W
Overload protection relay	Yes
DC input	
Max. withstand voltage at PV input terminal	60VDC
PV controller type	MPPT
MPPT maximum efficiency	≥99.5%
MPPT voltage range	11VDC ~ 60VDC
Number of MPPTs	1
Max. PV charging current	20A
Max. DC input power	1200W
Car charging	12VDC/10A
AC output	
Rated output power (@25°C)	3600W (2300W in bypass mode)
3-second transient surge output power	5400W
Output voltage level	230VAC±3%
Output frequency level	It is 50 Hz in default, can be set to 60 Hz, error ± 0.2%
Output voltage waveform	Pure sine wave
Output voltage harmonic distortion	≤3%
DC output	
USB-A output	5VDC/3A*2
USB-C output	5VDC/3A
USB-C PD output	PD 100W * 2
Cigarette lighter output	12VDC/10A*2

Product model	ATZ3600EU
Battery	
Battery type	Lithium iron phosphate
Rated voltage	51.2VDC
Range of operating voltage	40.0VDC ~ 58.4VDC
Range of operating temperature	Discharging: -20°C ~ 50°C; Charging: 0°C ~ 50°C
Nominal capacity	2048Wh
Charging time	
AC charging	1.2 hours
Car charging	17 hours
Solar charging (1200W input power)	1.7 hours
AC charging plus maximum PV charging	1.2 hours
Others	
Charging environment temperature	0°C ~ 40°C
Discharging environment temperature	-20°C ~ 40°C
Recommended working environment temperature	20°C ~ 35°C
Storage environment temperature	1 month: -10°C ~ 50°C; 3 months: -10°C ~ 45°C; 6 months: -10°C ~ 30°C
Relative humidity	< 80%
Altitude	< 4000 meters
Protection degree	IP20
Communication mode	Bluetooth
Man-machine interface	Monochrome LCD, English interface
External dimensions (L*W*H)	456x290x391mm (without secondary battery pack) 456x290x537mm (with secondary battery pack)
Net weight	29.0kg (without secondary battery pack) 44.5Kg (with secondary battery pack)



Product model	ATZ3600-BATT
Battery	
Battery type	Lithium iron phosphate
Rated voltage	51.2VDC
Range of operating voltage	40.0VDC ~ 58.4VDC
Range of operating temperature	Discharging: -20°C ~ 50°C; Charging: 0°C ~ 50°C
Nominal capacity	2048Wh
Discharging	
Rated discharging power	1000W
Charging	
AC charging time	2.1 hours
AC charging power	1000W
Max. MPPT input power	1000W
MPPT voltage range	11VDC ~ 60VDC
Max. PV charging current	20A
Solar charging time(1000W input power)	2.1 hours
Others	
Charging environment temperature	0°C ~ 40°C
Discharging environment temperature	-20°C ~ 40°C
Recommended working environment temperature	20°C ~ 35°C
Storage environment temperature	1 month: -10°C ~ 50°C; 3 months: -10°C ~ 45°C; 6 months: -10°C ~ 30°C
Relative humidity	< 80%
Altitude	< 4000 meters
Protection degree	IP20
External dimensions (L*W*H)	428x196x224.4mm
Net weight	15.5kg

2048Wh Battery Capacity

► Powering Your Appliances



Tablet
45 Cycles



Laptop
35 Hrs



Cell phone
101 Cycles



TV
28.6 Hrs



Projector
5.8 Hrs



Drones
42 Cycles



Portable Refrigerator
1.3 Hrs



Bluetooth Speaker
87 Hrs



Fan
35 Hrs



Coffee Maker
1.5 Hrs



Blender
8.5 Hrs



Rice Cooker
4.5 Hrs



Camp Lantern
175 Hrs



Induction Cooker
1.1 Hrs



Thermal Kettle
1 Hour



Electric Oven
0.7 Hrs



Air Conditioner
1.3 Hrs



Certificates



Diverse Output Ports: Meeting Daily Needs



Rated AC Output Power: 3600w
Peak Output Power: 5400w

3600w



Portable Design



LED Ambient Lighting

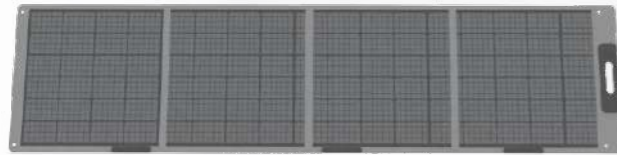


Dual-Wheel Handle Design



Heavy-Duty Casters

Multiple Charging Methods: Solar, Car Charging, Diesel Generator



Solar Power Charging

Full Charge for Main Battery Pack: 1.7 Hours

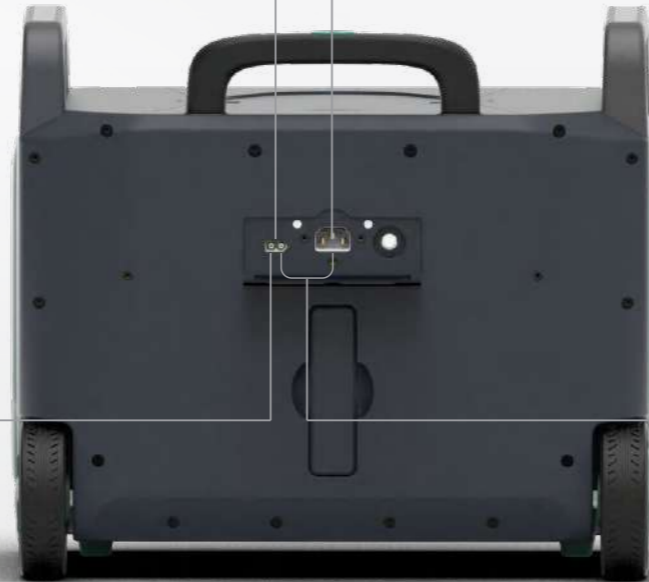


Car Charging

Full Charge for Main Battery Pack: 17 Hours

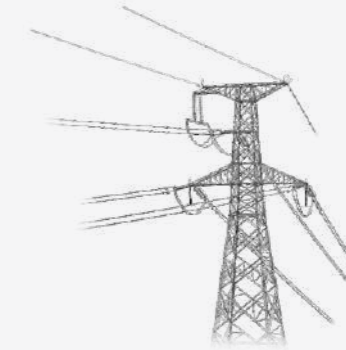
1

2



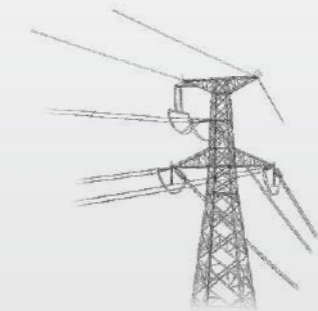
3

4



AC Charging

Full Charge for Main Battery Pack: 1.2 Hours



Solar Charging + AC Charging

Charge the Battery at the Max. Allowable Power

Full Charge for Main Battery Pack: 1.2 Hours

Versatile Applications

Provide Power to 99% of Commonly Used Electrical Equipment

Outdoor Operation



RV Camping



Aerial Photography

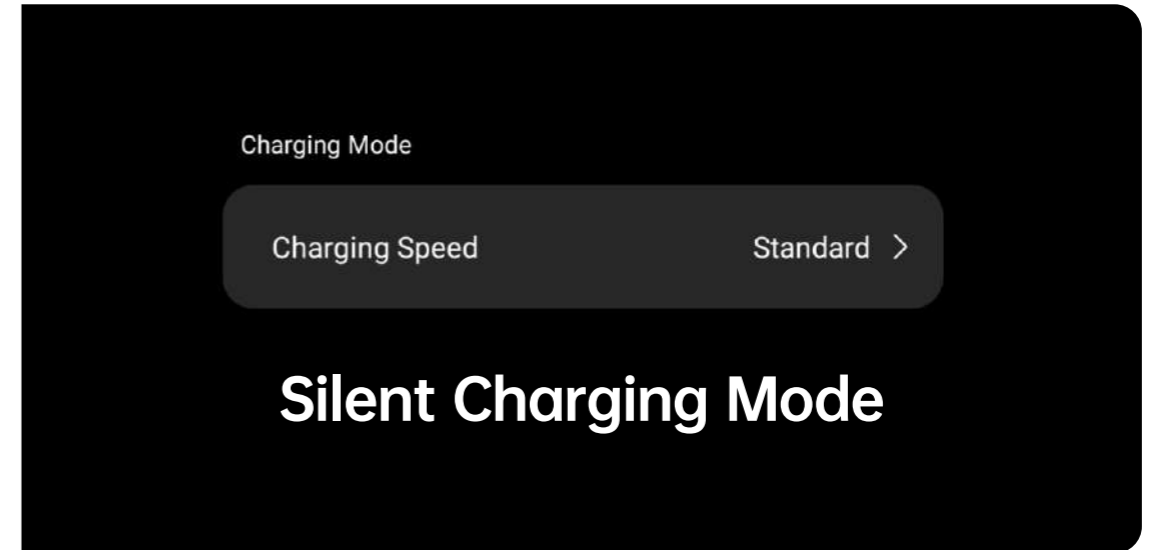
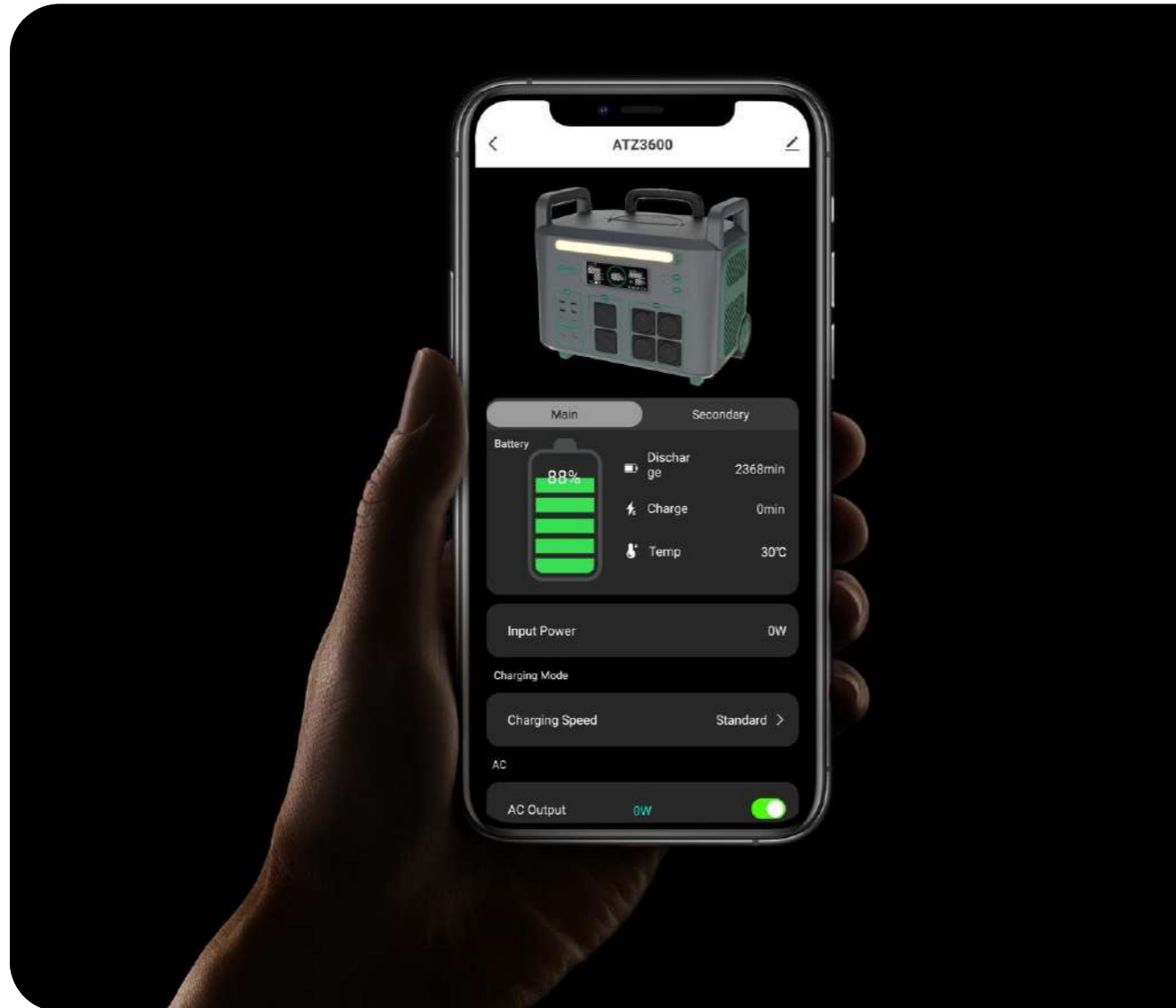


Home Backup Power



Energy-Efficient and Low Noise

Energy-Saving Mode & Silent Charging Mode (Min. Noise: 30dB)



Superfast Charging



Full Charge in 1.2 Hours

100%

Large Capacity

2048Wh Lithium Battery, Expandable to 4096Wh (without external connection)



Durable

Energy Storage Lithium Battery Cell with BMS Management

3000 CYCLES



BMS MANAGEMENT

Intelligent Management

Bluetooth for Monitoring, Infrared Remote Control

