

Aufbauübersicht für Elektrogeräte und Maschinen

Data form for electrical equipment and machinery



Seite 1 von 3
Page 1 of 3

Auftraggeber / Applicant:

Fertigungsstätte / Production facility: Same as above

Geräteart / Type of equipment: Adaptors

Typenbezeichnung / Type/model: FR101, FR102, FR103, FR104

Seriennr. / Serial no.: N/A

Nennspannung/Frequenz / Rated voltage/frequency: 250V~, 50Hz

Nennaufnahme/Nennstrom / Rated input power/current: Max. 3680W / 16A

Anschlußdaten-Hydraulik / Connection to hydraulic power: N/A

Anschlußdaten-Pneumatik / Connection to pneumatic power: N/A

Anschlußdaten-Wasser / Connection to water installation: N/A

Gewicht / weight: < 1.5kg

Lärmemission / noise emission (dB A): N/A

Ausführung / Construction:

Ortsfest	Stationary	<input type="checkbox"/>
Ortsveränderlich	Portable	<input checked="" type="checkbox"/>
Handgerät	Hand-held	<input type="checkbox"/>
Einbaugerät	Open-frame	<input type="checkbox"/>
Eingebaut	Built-in	<input type="checkbox"/>

Schutzklasse / Protection class:

Schutzklasse I: Schutzleiteranschluß	PE-connection	<input checked="" type="checkbox"/>
Schutzklasse II: Schutzisoliert	Double insulation	<input type="checkbox"/>
Schutzklasse III: Schutzkleinspannung/interne Stromversorgung	SELV/internally powered	<input type="checkbox"/>

Schutzart / Degree of protection against liquids: IP 20

Anschlußart / Supply connection:

Feste Anschlußleitung	Non detachable cord	<input checked="" type="checkbox"/>
Fester Anschluß	Permanent connection	<input type="checkbox"/>
Gerätesteckvorrichtung	Appliance inlet	<input type="checkbox"/>

Netzbetriebsart / Rated operation:

Dauerbetrieb	Continuous operation	<input checked="" type="checkbox"/>
Aussetzbetrieb	Intermittent operation	<input type="checkbox"/>
Kurzzeitbetrieb	Short time operation	<input type="checkbox"/>

Material: a) Gehäuse / Enclosure PP
b) Leiterplatten / p.c.b.

Zusätzliche Angaben für Laser, Klassifizierung nach EN 60825
(Additional information for Laser equipment, classification according to EN 60825)

Klasse / Class: N/A
Wellenlänge / Wavelength: N/A
Pulsdauer / Pulse duration: N/A

TEC_GCN_F_09.30E - Rev. 0 2010-11-26

Prüfbericht Nr. / Test Report No.: 70.410.16.104.04-00
-Amendment 1

Projektleiter / Project Engineer:



Ort / place: Ningbo

Stempel und Unterschrift /
Seal and signature

Datum / date: 2016-05-17

Revise date: 2017-10-11

Aufbauübersicht für Elektrogeräte und Maschinen

Data form for electrical equipment and machinery



Seite 2 von 3
Page 2 of 3

Sicherheitsrelevante Bauteile: (Schalter, Temperaturregler, Heizkörper, Stecker, Fassungen, Leitungen, Kondensatoren, Motoren und sonstige Wicklungen z.B. Transformatoren, Magnetspulen)
(Not-Aus Geräte, 2-Handsteuerungen, Verriegelungsschalter, Sicherheits-Lichtschranken, Sicherheitsventile, Programmierbare Steuerungen-SPS, hydraulische Steuerungen, pneumatische Steuerungen)
Safety relevant components: (switch, temperature regulator, heating element, plug, socket, wiring, capacitor, motors and other components with windings e.g. transformers, coils)
(emergency off devices, 2-hand-control-devices, interlock switches, safety light barriers, safety valves, programmable electronic controllers -PLC, hydraulic controllers, pneumatic controllers)

Bauteil/ Kind of component	Hersteller/ Manufacturer	Angaben über Typ, Stromstärke, Leistung, Transformatorspezifikationsnummer, Isolationsklasse/ Information about type, current, power, transformer specification number, insulating class	Prüfzeichen von Test mark from (VDE, BSI, UL etc.)
1..PCB integrated SPD part	Ningbo First-rate Electrical Appliance Co.,Ltd	Uc 250Vac,Uoc 6KV(for L-N,L/N-PE), Up:2KV(for L-N;L/N-PE)	Test with appliance
1.1 Varistor	Hongzhi Enterprises Ltd	14D391K Max peak current 6000A,class current (8/20us)50A,max DC voltage390V	VDE
1.2 Gas Discharge Tube	China Zhenjiang Electronics TUBE Factory	ZD2R470 DC.Spark over voltage 470V,initial impulse sparkover voltage<1000V, impulse discharge current 5KA	TÜV Rheinland
1.3 Thermal Link	Aupo Electronics Ltd.	A2-5A Tf115°C,AC250V,5A	VDE
2.PCB integrated telecom part	Ningbo First-rate Electrical Appliance Co.,Ltd		Test with appliance
2.1 Gas Discharge Tube (for telephone RJ11 jack part)	Wujin Jiangnan Discharge Tube Co.,Ltd	3R600 dc.Spark over voltage 600V impulse sparkover voltage<1400V	TÜV Rheinland
2.2 Gas Discharge Tube(F1 for network RJ45 jack)	China Zhenjiang Electronic Tube Factory	1,5KE6,8CA dc.Spark over voltage 600V,impulse sparkover voltage<1400V	TÜV Rheinland
2.3 Gas Discharge Tube(for TV port)	China Zhenjiang Electronics TUBE Factory	ZD2R 600V dc.Spark over voltage 600V,impulse sparkover voltage<1400V impuse discharge cruent 5KA	TÜV Rheinland
2.4 Gas Discharge Tube(for TV port)	China Zhenjiang Electronics TUBE Factory	ZD2R90 dc.Spark over voltage 90V,impulse sparkover voltage<900V,impuse discharge cruent 5KA	TÜV Rheinland
3. PCB	1) Wenzhou YongSheng Electric Technology Co.,LTD 2) Kingboard Laminates (Macao Commercial Offshore)Ltd.	YP21F01C Min thickness 0,71mm, flame class V-0,minimum 130°C KB-6160A, FR4, Min thickness 0,71mm, flame class V-0,minimum 130°C	Test with appliance Test with appliance
4. Enclosure and live part carrier	Samsung Total Petrochemicals Co., Ltd.	PP HJ730+	Test with appliance

TEC_GCN_F_09.30E - Rev. 0 2010-11-26

Prüfbericht Nr. / Test Report No.: 70.410.16.104.04-00
-Amendment 1

Projektleiter / Project Engineer:



Ort / place: Ningbo

Stempel und Unterschrift /
Seal and signature

Datum / date: 2016-05-17

Revise date: 2017-10-11

Aufbauübersicht für Elektrogeräte und Maschinen

Data form for electrical equipment and machinery



Sicherheitsrelevante Bauteile: (Schalter, Temperaturregler, Heizkörper, Stecker, Fassungen, Leitungen, Kondensatoren, Motoren und sonstige Wicklungen z.B. Transformatoren, Magnetspulen)
(Not-Aus Geräte, 2-Handsteuerungen, Verriegelungsschalter, Sicherheits-Lichtschranken, Sicherheitsventile, Programmierbare Steuerungen-SPS, hydraulische Steuerungen, pneumatische Steuerungen)

Safety relevant components: (switch, temperature regulator, heating element, plug, socket, wiring, capacitor, motors and other components with windings e.g. transformers, coils)

(emergency off devices, 2-hand-control-devices, interlock switches, safety light barriers, safety valves, programmable electronic controllers -PLC, hydraulic controllers, pneumatic controllers)

Bauteil/ Kind of component	Hersteller/ Manufacturer	Angaben über Typ, Stromstärke, Leistung, Transformatorspezifikationsnummer, Isolationsklasse/ Information about type, current, power, transformer specification number, insulating class	Prüfzeichen von Test mark from (VDE, BSI, UL etc.)
5. Shutter box	Ningbo Futian Engineering Plastic Co.Ltd	CB600 ABS/PC,all colour, minimum thickness 1,6mm	Test with appliance
6. Shutter body	BASE-SE	A3EG6(f1)(b1) PA66 material,all color,minimum thickness 1,0mm	Test with appliance
7. L/N Contact, PE-Contacts	Shaoxing Yueyu Copper Tape Co., Ltd.	Brass H62, QSn6.5-0.1	Test with appliance

8. Marking

Representative model:



Photo Documentation

Project number: 70.410.16.104.04-00-Amendment 1

Type of Product: FR101, FR102, FR103, FR104



Product Service

FR101-104



Photo Documentation

Project number: 70.410.16.104.04-00-Amendment 1

Type of Product: FR101, FR102, FR103, FR104



Product Service

Representative model: FR101

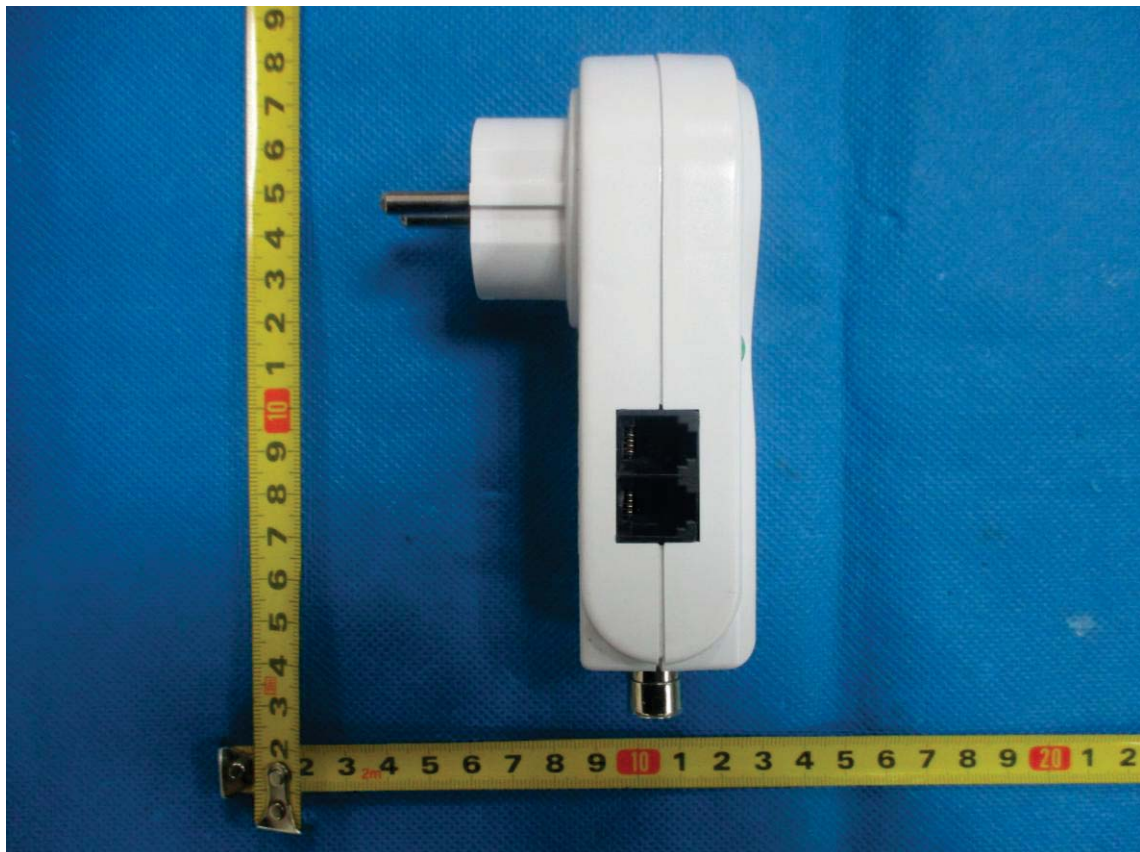


Photo Documentation

Project number: 70.410.16.104.04-00-Amendment 1

Type of Product: FR101, FR102, FR103, FR104



Product Service



Photo Documentation

Project number: 70.410.16.104.04-00-Amendment 1

Type of Product: FR101, FR102, FR103, FR104



Product Service

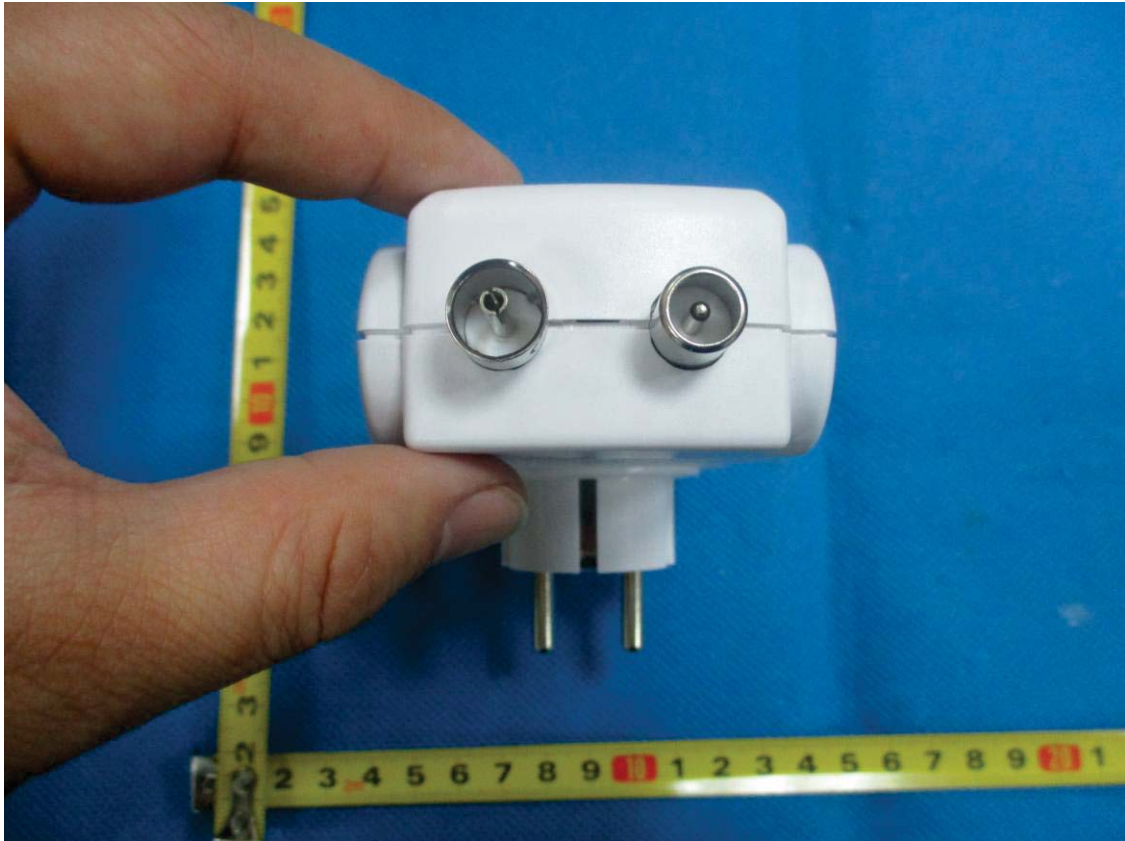


Photo Documentation

Project number: 70.410.16.104.04-00-Amendment 1

Type of Product: FR101, FR102, FR103, FR104



Product Service

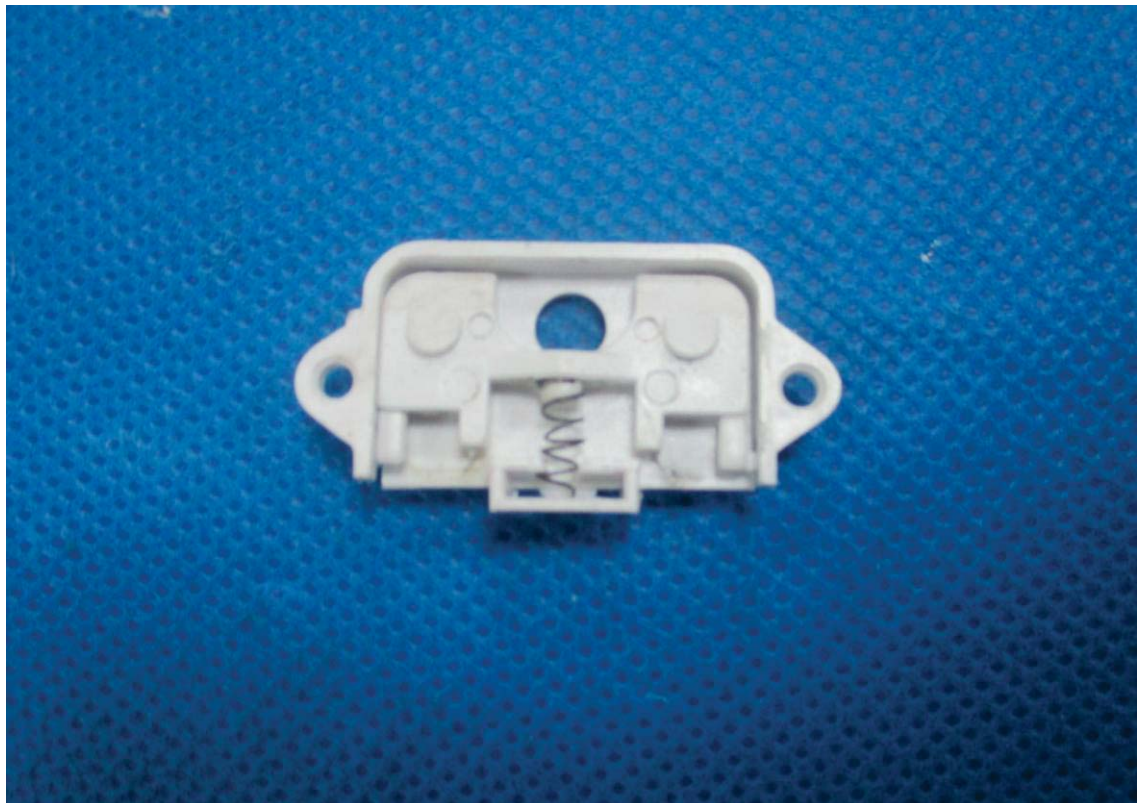
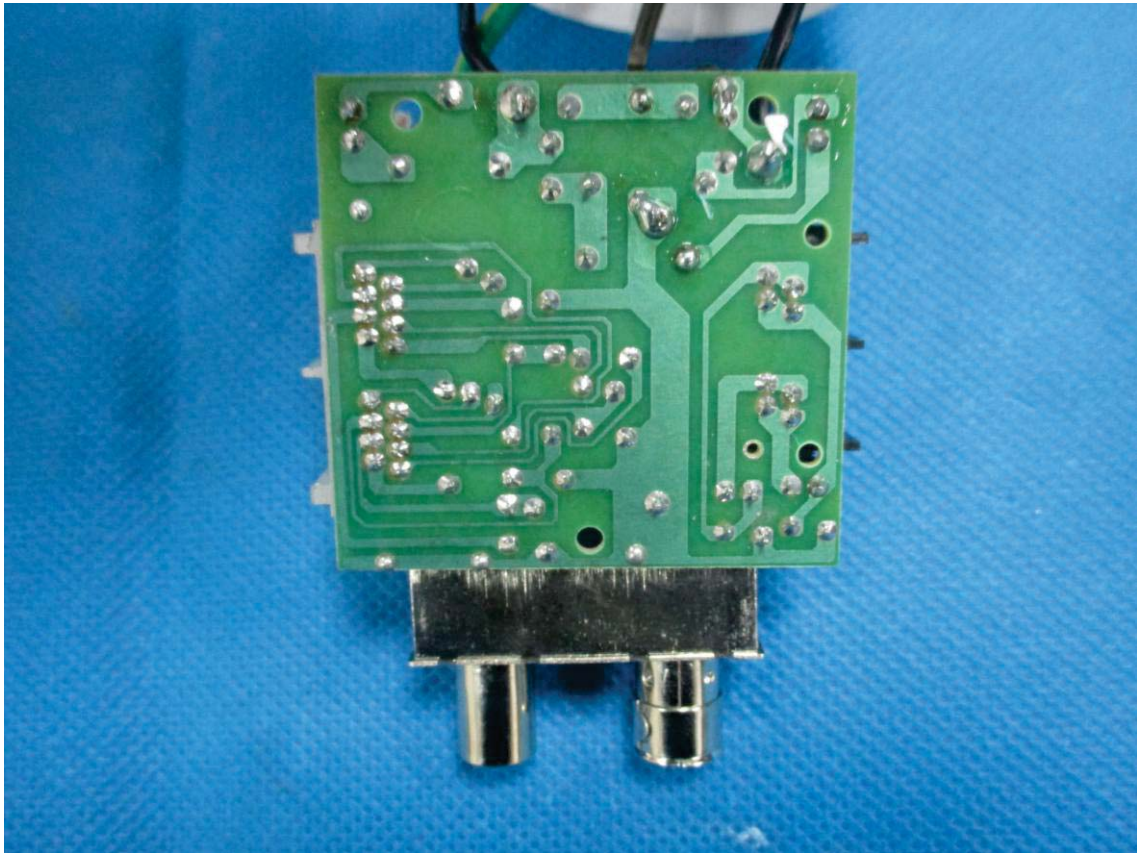


Photo Documentation

Project number: 70.410.16.104.04-00-Amendment 1

Type of Product: FR101, FR102, FR103, FR104



Product Service

